

Unity Sky Lodge End of Year Report 2022-23

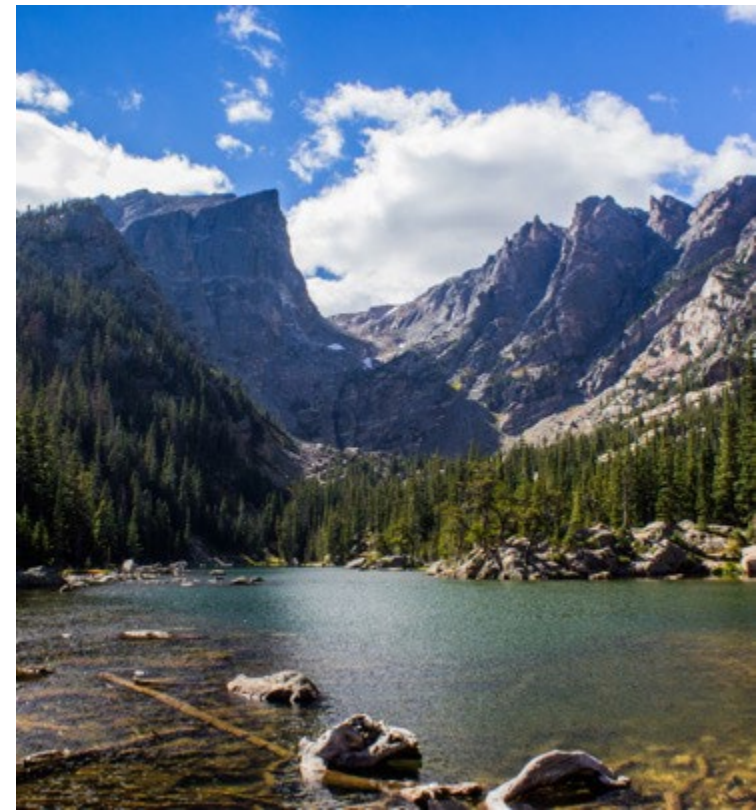
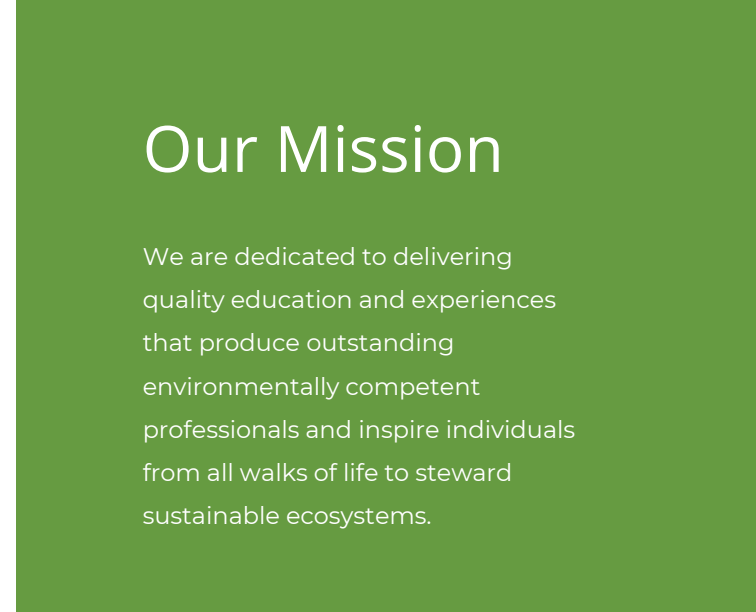
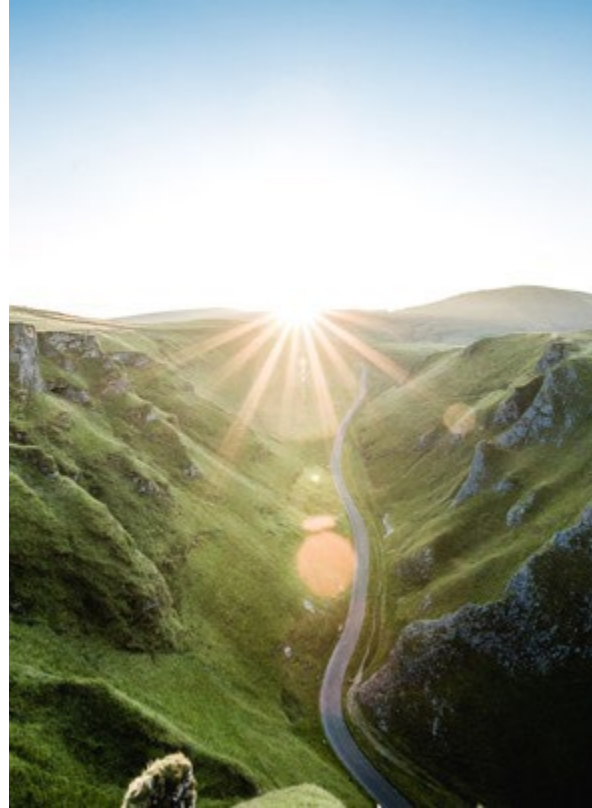
Unity Environmental University



Unity Environmental University is more than an institution of higher education; we are a multifaceted organization with various Sustainable Educational Business Units (SEBU).

The **Sustainable Ventures** SEBU represents a portfolio of purpose driven products and services aimed at growing environmental awareness with new audiences. Each venture is a real-world business manifestation of Unity's curriculum helping to expand the mission of the University.

About Our University



A Letter from Unity's President

Unity is proud to offer real-world manifestations of our curriculum at Sky Lodge

Dear Elaine and John,

Thank you for the gift of Sky Lodge! Since 2018 Unity Environmental University has been working to bring students and guests to this beautiful property in the mountains of Western Maine and we are committed to seeing the property grow and thrive. During the previous fiscal year Unity Environmental University invested over \$130,000.00 in the maintenance of the Sky Lodge campus as a part of its \$231,000.00 financial contribution to the Sky Lodge operating budget. In addition to our operational investments, Unity invested over \$76,000.00 to update the information technology infrastructure of the campus. This year we are planning to upgrade the buildings' exteriors as well as their critical systems such as the HVAC and electrical systems.

We are continuing to pursue qualified candidates to run and maintain the property even though the labor shortage in the hospitality industry, coupled with the rural location is presenting challenges in hiring qualified individuals for our open positions. Despite our hiring challenges, we hosted a sustainability leadership class last year (you will enjoy reading some of their thoughts about the experience a little later in the report). We have also welcomed seniors back to the Moose River Valley Center and they are once again enjoying activities such as painting and doing crafts with each other. We didn't just re-open the Center however, we also applied for and received an AmeriCorps Planning grant to develop programing aimed at improving the lives of those served by the Moose River Valley Center which we are very excited about.

In the coming months we are planning to expand our course offerings to students in Unity's Hybrid Learning as well as open our dining room to the general public on a limited basis.

With Pride,



Dr. Melik Peter Khoury
President/CEO, Unity Environmental University



Surrounding students and guests with natural beauty

“The traditional liberal arts college education is changing, and we are looking at every way to give Unity students the transformational learning experiences they expect and deserve,” said Dr. Melik Peter Khoury.

Built in 1929 and gifted to Unity in 2018 by the Couri Foundation, Sky Lodge is our 150-acre campus in Moose River, Maine. A premier destination for expedition education, summer camps, business meetings, and getaways for non-profits, clubs, and other organizations.

When not hosting educational activities, the property opens its doors to the general public as a year-round haven for nature-lovers and outdoor adventure enthusiasts. Visitors enjoy hiking, golfing, biking, canoeing, kayaking, fishing, whitewater rafting, cross-country skiing, snowshoeing, and snowmobiling.

Discover Sky Lodge

Making an Impact



The Moose River Valley Center, historic lodge, and trail system remain integral to the region. Area seniors enjoy crafts and painting, local students enjoy the lodge for learning and celebrations, and the outdoor adventure trails are a year-round attraction for all.



Education Highlight: Sustainability Leadership

Student Melissa Willhouse stated, “The lodge provided a wonderful environment for this course including common areas so the class could come together, outdoor seating and accommodations so people could find their own peace as needed. The accommodations were great and allowed for a cohesive, tranquil environment, while the amenities on the property provided boundless opportunities for wilderness education. The trails on the property provided for wonderful outdoor classrooms, and stepping into the thick brush was like stepping into an old world, one teeming with life among the thick vegetation. The surrounding bodies of water just a few minutes away also created wonderful learning environments, including Parlin Pond. I especially enjoyed hiking to Sugar Shack Falls and learning about the production of maple syrup in the area.



“The night sky took my breath away. I have never been in a place with so little light pollution that allowed me to see the universe so clearly, without any tools or technologies. The coolness and freshness of the local water bodies was really refreshing as well. I was surprised to see so many different species of flowers in the area and would love to learn more about the botany and potential medicinal plants grown in and around this region.”



Year in Review

\$42,500+

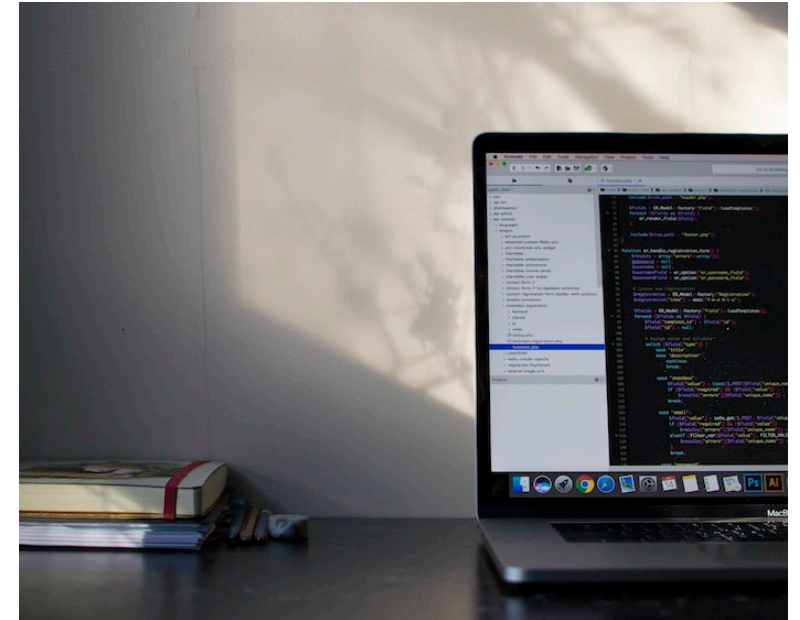
Received an AmeriCorps Planning grant to develop programing aimed at improving the lives of those served by the Moose River Valley Center.

16 States

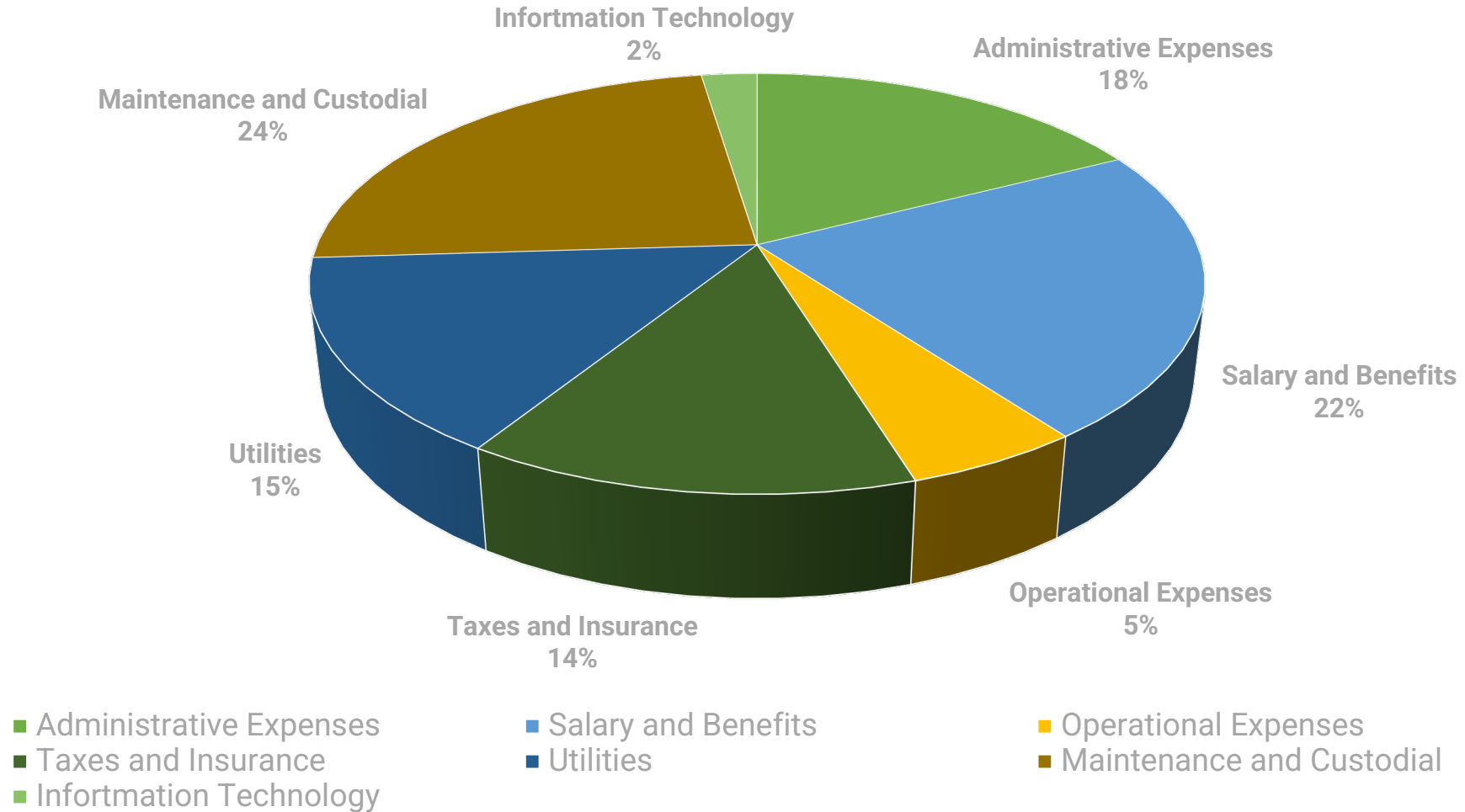
Welcomed guests and students from as far as Hawaii and the Netherlands traveling from 16 states and 2 countries to visit the Moose River Valley.

\$76,000+

Invested in technology to improve reliability, enhance online security, stabilize the wi-fi, and improve the functionality of the property for students and guests.

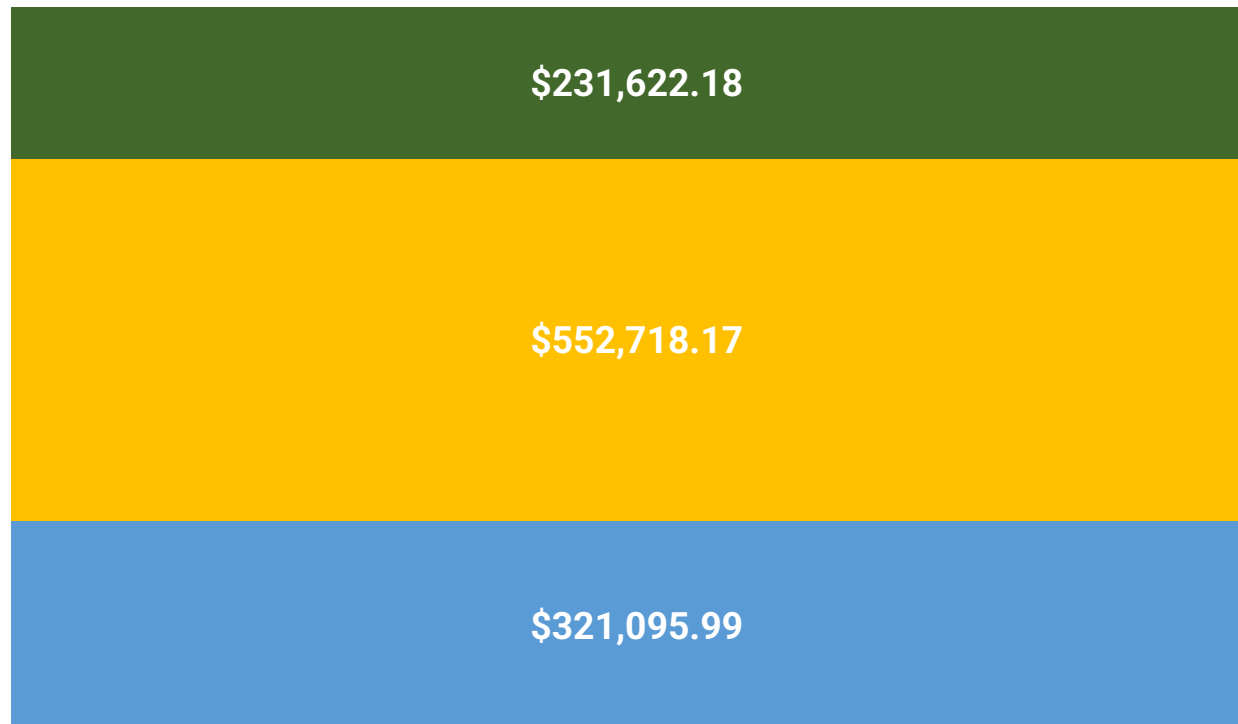


2022- 2023 Expense Allocations



2022 – 2023 Revenue, Expense & the University's Financial Commitment

■ Revenue ■ Expenses ■ University's Financial Commitment





2023-2024 INVESTMENTS

Preparing Sky Lodge for future generations



ESSENTIAL SYSTEMS

Upgrading our essential systems including electrical, plumbing, and HVAC to ensure efficient operations and reduce the risk of failures and costly repairs.



EXTERIOR IMPROVEMENTS

Exterior painting, staining, and window replacement are planned for the historic lodge and surrounding buildings to extend the life of the campus structures and improve aesthetics.



OUTDOOR ADVENTURE

Leaning into our commitment to environmental and outdoor education, upgrades and an extension of the trails are planned to allow for increased community use for walking, running, skiing, and snowshoeing.



ENVIRONMENTAL EFFICIENCY

Planned modernization of our infrastructure to incorporate sustainable practices, increasing energy efficiency and reducing environmental impact, ultimately creating a more comfortable and resilient environment.

2023-2024 INCREASED EDUCATIONAL OFFERINGS

Building out a year-round calendar of educational experiences and courses to be offered to students and non-students interested in educational tourism in Maine.



Continued improvements to the classrooms in the Moose River Valley Center, with state-of-the-art technological improvements, along with continued work with Volunteer Maine and AmeriCorps.

